

RESOLUTION NO. 03 -125 .

**RESOLUTION CREATING RURAL SPECIAL IMPROVEMENT MAINTENANCE
DISTRICT TO BE KNOWN AS R.S.I.D. #709M
Clarks Fork River Ranch Subdivision**

WHEREAS, the Board of County Commissioners of Yellowstone County, Montana met in regular session and executed a Resolution of Intent to Create a Rural Special Improvement Maintenance District #709M for Clarks Fork River Ranch Subdivision as described in Exhibit A and particularly shown in Exhibit B (map) and,

WHEREAS, the Clerk and recorder published the notice of the passage of Resolution of Intent to Create the District in the Billings Gazette on October 3rd, and October 10th, 2003, and mailed a copy of the Notice to every person, firm or corporation owning property in the District; and,

WHEREAS, the board of County Commissioners finds, determines and declares that:

1. That the public interest of convenience requires the creation of a Rural Special Improvement Maintenance District as hereinafter described;
2. That the costs of providing maintenance shall be borne by owners of the property included within the boundaries of the Rural Special Improvement Maintenance District with all lots being assessed an equal amount on a per lot basis;
3. That the purpose of forming the District is to provide the maintenance and preservation of the roadway so repaired;
4. That the Commissioners have been presented with a valid Petition to create the proposed District;

NOW, THEREFORE, BE IT RESOLVED by the Board of County Commissioners of Yellowstone County as follows:

1. The Commissioners have acquired jurisdiction to create a Rural Special Maintenance district No. #708M to provide for the annual maintenance, operation and preservation of the roadway system. The maintenance costs are more particularly described in Exhibit C. The estimated costs shown do not preclude other eligible street maintenance expenditures.
2. All of the costs of the District shall be assessed equally on a per lot basis for all existing and future lots. The boundaries of this district are shown on the map attached as Exhibit B and described in Exhibit A.
3. The number of the Rural Special Maintenance District thereof shall be **No. 709M.**
4. All lots accessing their property from the improved streets will benefit from proposed R.S.I.D. and shall be assessed for road maintenance. All lots will be assessed an equal amount based upon the total cost of the maintenance.

5. The Commissioners desire that an Ad Hoc Committee be appointed to make recommendations to the Commissioners with regard to the need for assessments to be made for the maintenance and the amount of the assessments, and how the assessments should be spent. The Commissioners ask that the Petitioners submit a list of some individuals who are willing to serve on the Ad Hoc Committee.

PASSED AND ADOPTED by the Board of County Commissioners of Yellowstone County, Montana, this 14th day of October, 2003.


BOARD OF COUNTY COMMISSIONERS
YELLOWSTONE COUNTY, MONTANA



Bill Kennedy, Chair




James E. Reno, Member



John Ostlund, Member

(SEAL)
ATTEST:



Tony Nave, Clerk and Recorder

EXHIBIT A

PETITION TO ESTABLISH A RURAL SPECIAL IMPROVEMENT DISTRICT (RSID)

**SECTION B
LEGAL DESCRIPTIONS**

PROPERTY LEGAL DESCRIPTIONS

~~Lots 1 through 5, Block 1, Clarks Fork River Ranch Subdivision
according to the official plat filed and of record
in the office of the Clerk and Recorder of
Yellowstone County, as Document No.~~

DISTRICT MAP

R.S.I.M.D. No. _____
Clark's Point Drive
Clark's Fork River Ranch Subdivision
August 2003

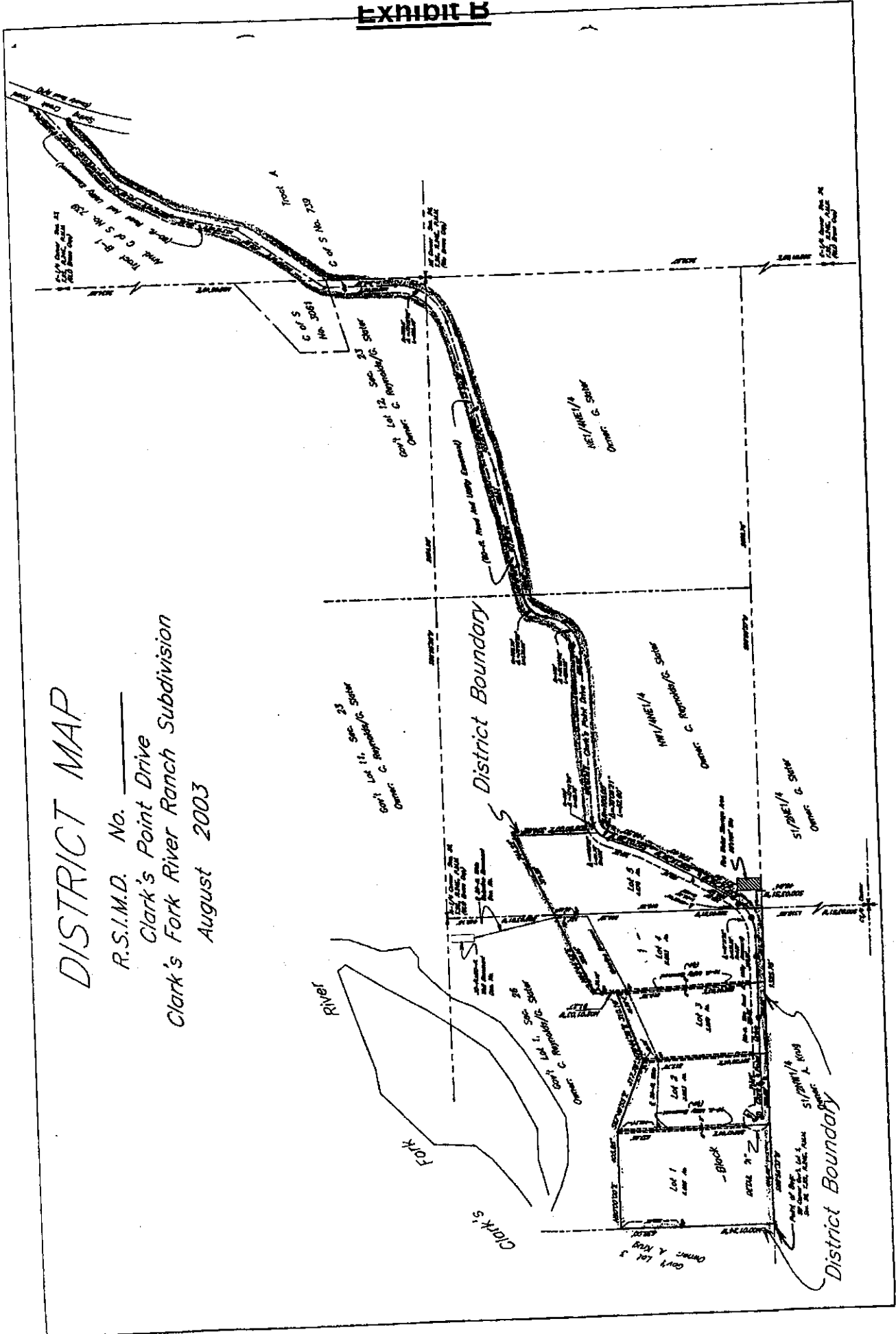


EXHIBIT D

PETITION TO ESTABLISH A RURAL SPECIAL IMPROVEMENT DISTRICT (RSID)

**SECTION C
ESTIMATED ANNUAL MAINTENANCE COST**

FALL MAINTENANCE:

ACTIVITY	ESTIMATED COST
Regrade Surface Gravel	\$ 250.00
	\$

WINTER MAINTENANCE:

ACTIVITY	ESTIMATED COST
Snow Plowing & Regrade Gravel Surface	\$ 800.00
	\$

SPRING MAINTENANCE:

ACTIVITY	ESTIMATED COST
Regrade Surface Gravel	\$ 250.00
	\$

SUMMER MAINTENANCE:

ACTIVITY	ESTIMATED COST
Regrade Surface Gravel	\$ 250.00
	\$

TOTAL ESTIMATED ANNUAL MAINTENANCE COST \$1550.00